



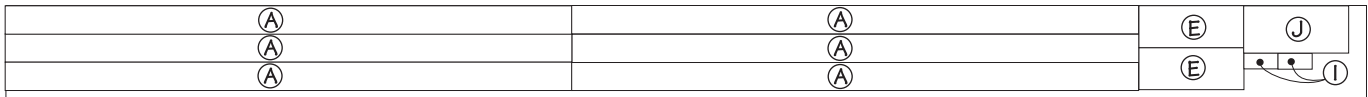
ShopNotes[®] Cutting Diagram

Fold-Down Workstation

Hardware

- (2) $\frac{5}{8}$ " I.D. x $\frac{3}{4}$ " O.D. Flange Bearings
 - (2) $\frac{3}{8}$ " T-Nuts
 - (2) $\frac{3}{8}$ " Leg Levelers
 - (12) #8 x $3\frac{1}{2}$ " Fh Woodscrews
 - (8) #8 x $2\frac{1}{2}$ " Fh Woodscrews
 - (54) #8 x $1\frac{1}{4}$ " Fh Woodscrews
 - (8) #8 x 3" Fh Woodscrews
 - (2 Pr.) 3" x 2" Butt Hinges
 - (2) $\frac{1}{8}$ " x 2" - 17" Steel Plate
 - (2) $\frac{5}{8}$ " x $1\frac{3}{4}$ " Steel Rod
 - (1) $\frac{7}{16}$ " x $1\frac{1}{8}$ " Spring
 - (1) 3" x 2" Loose Pin Hinge
 - (2) $3\frac{1}{2}$ " Sash Pulls (w/screws)
 - (2 Pr.) 2" x $1\frac{5}{8}$ " Hinges w/screws
 - (2) Magnetic Catches & Strike Plates (w/screws)
 - (12) $\frac{1}{4}$ " Shelf Pins
 - (1) Vise & Handle w/mounting hardware (Opt.)
 - (2) Magnetic Tool Bars w/screws (Opt.)
- Note: Hardware list does not include hardware for mounting workstation, tool rack, or cabinet to wall.

2" x 10" - 12' (THREE BOARDS)



2" x 4" - 96" (TWO BOARDS)



2" x 4" - 96"



2" x 4" - 96" (TWO BOARDS)



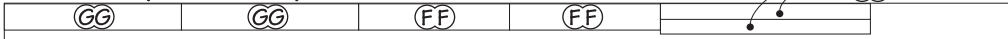
2" x 4" - 96"



2" x 4" - 96"



2" x 4" - 96" (TWO BOARDS)



2" x 4" - 96" (TWO BOARDS)



Materials

Workbench

A Top (1)	2 1/2 x 24 - 59 3/4
B Side Panels (2)	9 1/4 x 18 7/8 - 1 1/2 Ply.
C Edging	3/4 x 1 1/2 - 96 Rgh.
D Stretchers (2)	1 1/2 x 3 1/2 - 60
E Corner Braces (4)	1 1/2 x 4 - 10
F Legs (2)	3 x 3 - 31 1/2
G Rails (4)	1 1/2 x 3 1/2 - 17 3/4
H Spacers (2)	3/4 Rgh. x 3 - 5
I Stops (2)	1 x 1 1/2 - 2 Rgh.
J Face Block (1)	3 x 4 1/2 - 10

Tool Rack

K Top Rail (1)	1 1/2 x 1 1/2 - 61
L Bottom Rail (1)	1 1/2 x 3 1/2 - 60
M End Stiles (2)	1 1/2 x 1 1/2 - 20

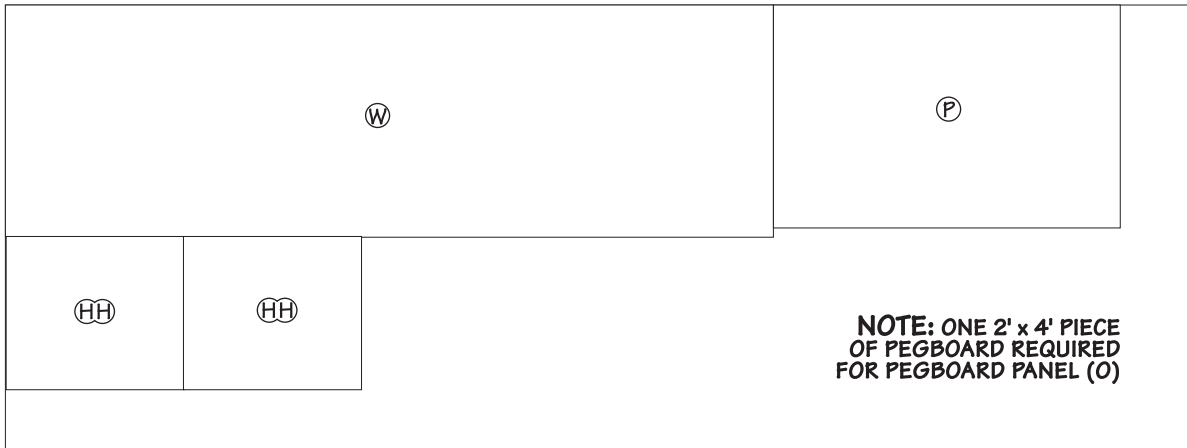
N Center Stiles (2)	1 1/2 x 1 1/2 - 19
O Pegboard Panel (1)	18 x 28 - 1/4 Pgbd.
P Hardboard Panel (1)	18 x 28 - 1/4 Hdbd.
Q Filler Panel (1)	17 x 27 - 3/4 Ply.
R Filler Strip (1)	1/4 x 1 1/2 - 3
S Benchtop Stop (1)	1 1/2 x 2 7/8 - 18 1/8

BB Cleats (2)	3 1/2 x 20 1/2 - 3/4 Ply.
CC Frame Rails (6)	3/4 x 1 1/2 - 19
DD Frame Stiles (4)	3/4 x 1 1/2 - 20
EE Filler Strip (1)	1 1/2 x 3/4 - 62
FF Door Rails (4)	3/4 x 2 1/2 - 14 3/8
GG Door Stiles (4)	3/4 x 2 1/2 - 16 7/8
HH Door Panels (2)	12 3/8 x 14 3/8 - 1/4 Hdbd.

Wall Cabinet

T Top/Bottom (2)	9 1/4 x 62 1/2 - 3/4 Ply.
U Sides (2)	9 1/4 x 20 - 3/4 Ply.
V Dividers (2)	9 x 18 1/4 - 3/4 Ply.
W Back (1)	18 3/4 x 62 - 1/4 Hdbd.
X Side Shelves (2)	8 x 20 3/8 - 3/4 Ply.
Y Center Shelf (1)	8 x 18 7/8 - 3/4 Ply.
Z Side Edging (2)	3/4 x 3/4 - 20 3/8
AA Center Edging (1)	3/4 x 3/4 - 18 7/8

36" x 96" - 1/4" HARDBOARD



48" x 96" - 3/4" PLYWOOD

