

space-saving Workshop

Materials & Hardware

END CABINET

A	Sides (2)	23 x 80 - 3/4 Ply.
B	Top/Fixed Shelf (2)	23 x 37 - 3/4 Ply.
C	Divider (1)	22 1/4 x 38 - 3/4 Ply.
D	Back (1)	37 x 38 - 3/4 Ply.
E	Small Shelf (1)	18 1/8 x 22 1/4 - 3/4 Ply.
F	Rails (2)	3/4 x 3 1/2 - 37
G	Tray (1)	17 5/8 x 22 - 3/4 Ply.
H	Tray Front (1)	3/4 x 3 - 18 3/4
I	Tray Cleat (1)	1 1/2 x 1 1/2 - 13
J	Tray Lock (1)	3/4 x 1 1/2 - 19 1/2

CENTER CABINET

K	Sides (2)	23 x 80 - 3/4 Ply.
L	Top/Fixed Shelf (2)	23 x 48 - 3/4 Ply.
M	Divider (1)	22 1/4 x 30 - 3/4 Ply.
N	Back (1)	48 x 30 - 3/4 Ply.
O	Adjustable Shelves (3)	14 x 23 5/8 - 3/4 Ply.
P	Rails (2)	3/4 x 3 1/2 - 48

WORKBENCH

Q	Sides (2)	23 x 34 1/2 - 3/4 Ply.
R	Top/Bottom (2)	23 x 44 1/2 - 3/4 Ply.
S	Fixed Shelf (1)	22 1/4 x 44 1/2 - 3/4 Ply.
T	Divider (1)	22 1/4 x 20 3/4 - 3/4 Ply.
U	Back (1)	29 1/2 x 44 1/2 - 3/4 Ply.
V	Adjustable Shelves (2)	13 1/4 x 21 7/8 - 3/4 Ply.
W	Rail (1)	3/4 x 3 1/2 - 44 1/2
X	Drawer Fronts/Backs (4)	1/2 x 3 1/2 - 20 3/8
Y	Drawer Sides (4)	1/2 x 3 1/2 - 22
Z	Drawer Bottoms (2)	20 3/8 x 21 1/2 - 1/4 Ply.
AA	False Fronts (2)	3/4 x 6 1/2 - 22 1/2
BB	Benchtop (1)	1 1/2 x 27 - 48
CC	Vise Spacer (1)	1 1/16 x 4 - 7
DD	Jaw Liners (2)	1/2 x 2 1/2 - 7

ROUTER TABLE

EE	Sides (2)	3 1/2 x 24 - 3/4 Ply.
FF	Base (1)	7 1/2 x 22 1/2 - 3/4 Ply.
GG	Back (1)	22 1/2 x 24 - 3/4 Ply.
HH	Top/Long Shelf (2)	2 3/4 - 22 1/2 - 3/4 Ply.
II	Short Shelves (2)	2 3/4 - 12 1/2 - 3/4 Ply.
JJ	Fence Rests (2)	3/4 x 3/4 - 2 3/4
KK	Arms (2)	3/4 x 2 - 42 1/4
LL	Tabletop (1)	17 7/8 x 25 1/2 - 3/4 Ply.
MM	Front Rail (1)	3/4 x 2 - 25 1/2
NN	Fillers (2)	4 x 17 7/8 - 3/4 Ply.
OO	Fence Base (1)	2 x 22 - 3/4 Ply.
PP	Fence Face (1)	3 x 22 - 3/4 Ply.

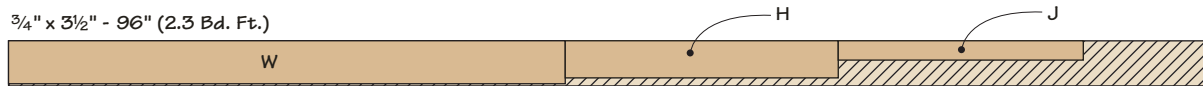
- (151) #8 x 1 1/2" Fh Woodscrews
- (20) #8 x 1" Fh Woodscrews
- (2) 1/4"-20 x 2 1/2" Hex Bolts
- (6) 1/4" Washers
- (2) 1/4"-20 Lock Nuts
- (3) 6 1/2" Utility Pulls w/Screws
- (1 pr.) 22" Full-Extension Drawer Slides w/Screws
- (1) 36" T-Track w/Screws
- (2) 1/4"-20 x 2" Flange Bolts
- (2) 1/4"-20 Knob w/Insert
- (3) Toggle Clamps w/Screws
- (2 pr.) 22" Full-Extension Drawer Slides w/Screws
- (1) 7" Bench Vise
- (6) Heavy-Duty Lifting Levelers w/Screws
- (1) 2" Slide Bolt w/Screws
- (2) 3/4"-dia. Nylon Nail-On Glides
- (4) 5/16" x 3" Lag Screws w/Washers
- (20) 1/4" Shelf Pins
- (8) #8 x 1 1/4" Fh Woodscrews

Cutting Diagram - Hardwood

3/4" x 3 1/2" - 96" (2 BOARDS @ 2.3 Bd. Ft. EACH)



3/4" x 3 1/2" - 96" (2.3 Bd. Ft.)



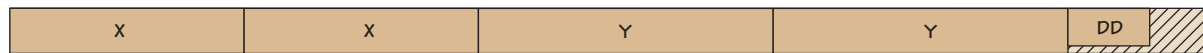
3/4" x 3 1/2" - 96" (2.3 Bd. Ft.)



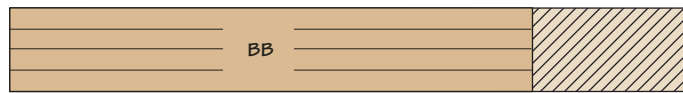
3/4" x 6 1/2" - 72" (3.3 Bd. Ft.)



1/2" x 3 1/2" - 96" (2 BOARDS @ 2.3 Sq. Ft. EACH)

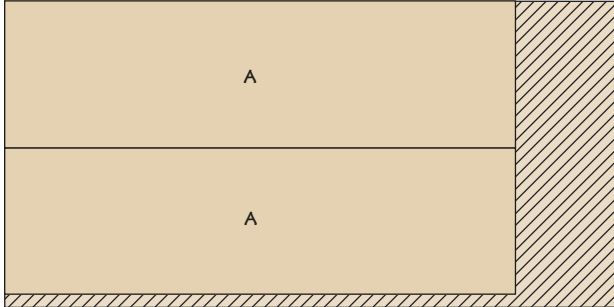


1 1/2" x 6 1/2" - 60" (5 BOARDS @ 5.4 Bd. Ft. EACH)

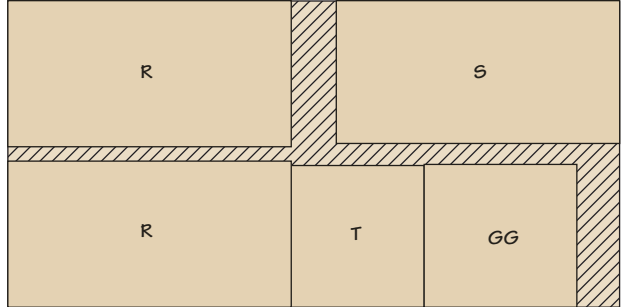


Cutting Diagram - Plywood

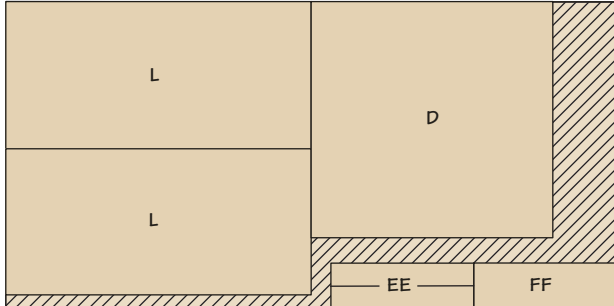
48" x 96" - 3/4" PLYWOOD



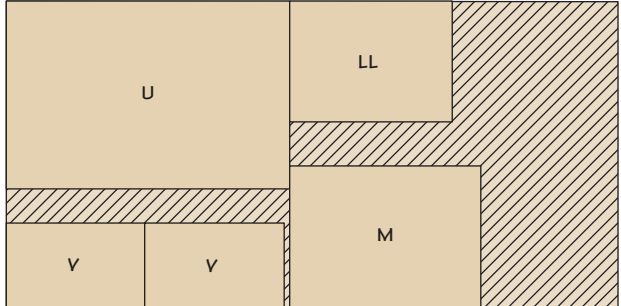
48" x 96" - 3/4" PLYWOOD



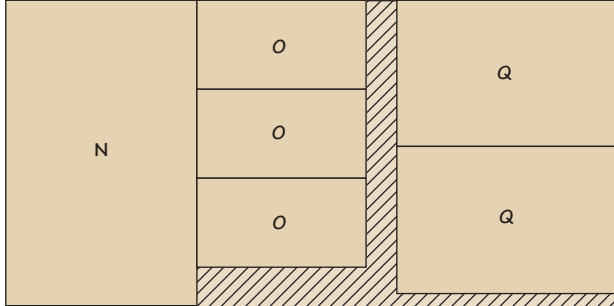
48" x 96" - 3/4" PLYWOOD



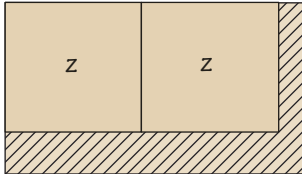
48" x 96" - 3/4" PLYWOOD



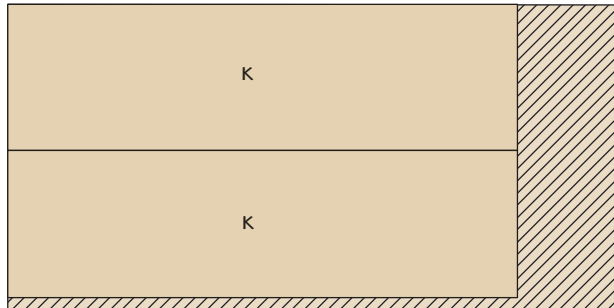
48" x 96" - 3/4" PLYWOOD



24" x 48" - 1/4" PLYWOOD



48" x 96" - 3/4" PLYWOOD



48" x 96" - 3/4" PLYWOOD

