

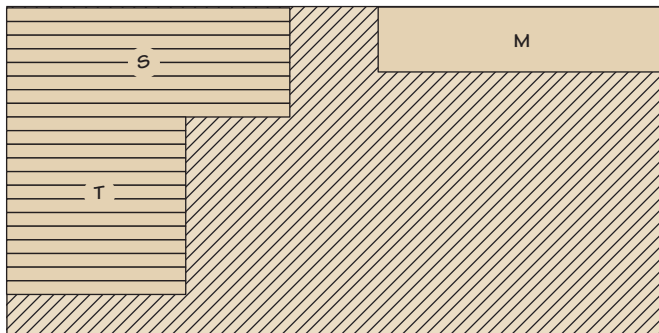
## roll-around Finishing Center

### Materials List

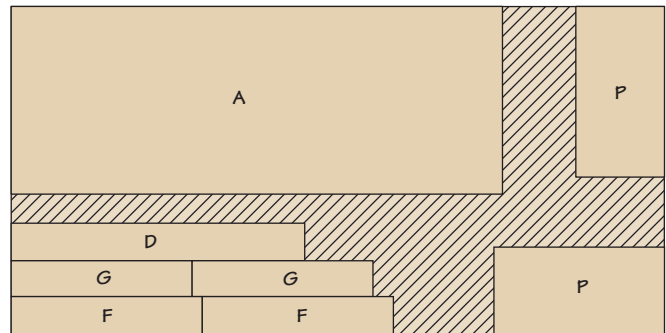
|   |                             |                   |   |                        |                  |  |
|---|-----------------------------|-------------------|---|------------------------|------------------|--|
| A | Sides (2)                   | 27½ x 72 - ¾ MDF  | T | Short Grid Strips (13) | 2 x 26¼ - ¼ Ply. | <ul style="list-style-type: none"> <li>• (2) Switch Cover Plates</li> <li>• (1 box ea.) Red &amp; Yellow Wire Nuts</li> <li>• (8 ft.) 12ga. SJ Cable</li> <li>• (1) 115v Grounded Plug</li> <li>• (1) 6" x 24" Round Furnace Duct</li> <li>• (1) 6" x 10' Flexible Duct</li> <li>• (1) 6"-dia. Hose Clamp</li> <li>• (1) 1" Cable Grommet</li> <li>• (14) #10 x ⅝" Sheet Metal Screws</li> <li>• (4) ½" Cable Clamps w/Screws</li> <li>• (25 ft.) ½" Flexible Conduit</li> <li>• (1) Strain Relief for Power Cord</li> <li>• (12) ½" Flexible Conduit Connectors</li> <li>• (40 ft.) 12 ga. Stranded Wire - White</li> <li>• (30 ft.) 12 ga. Stranded Wire - Black</li> <li>• (30 ft.) 12 ga. Stranded Wire - Green</li> <li>• (1 pkg.) Spade Terminals for 12 ga. Wire</li> <li>• (3) ½"-dia. x 41¼" EMT Conduit</li> <li>• (1 pr.) Folding Shelf Brackets</li> </ul> |
| B | Back (1)                    | 42 x 72 - ¾ MDF   | U | Hanger Strips (2)      | 2 x 19 - ¾ MDF   |  |
| C | Front (1)                   | 28 x 43 - ¾ MDF   | V | Adjustable Shelf (1)   | ¾ x 12 - 41½     |  |
| D | Switch Panel (1)            | 6 x 43 - ¾ MDF    |   |                        |                  |  |
| E | Blower/Light Panel (2)      | 27 x 42 - ¾ MDF   |   |                        |                  |  |
| F | Caster Plates (2)           | 6 x 28 - ¾ MDF    |   |                        |                  |  |
| G | Caster Plate Blocks (2)     | 5¼ x 26½ - ¾ MDF  |   |                        |                  |  |
| H | Blower Standoff Ring (1)    | 8-dia. - 1½ MDF   |   |                        |                  |  |
| I | Blwr. Flnge./Dct. Plts. (2) | 6¾ x 7¾ - ¾ MDF   |   |                        |                  |  |
| J | Top Back Filler Strip (1)   | 4½ x 40 - ¾ MDF   |   |                        |                  |  |
| K | Top Side Filler Strips (2)  | 4½ x 26½ - ¾ MDF  |   |                        |                  |  |
| L | Top Front Filler Strip (1)  | 4½ x 25 - ¾ MDF   |   |                        |                  |  |
| M | Light Bar (1)               | 9½ x 41½ - ¼ Ply. |   |                        |                  |  |
| N | Top (1)                     | 26½ x 41½ - ¾ MDF |   |                        |                  |  |
| O | Front/Back Frames (2)       | 13 x 41½ - ¾ MDF  |   |                        |                  |  |
| P | Side Frames (2)             | 13 x 25 - ¾ MDF   |   |                        |                  |  |
| Q | Long Ledger Strips (2)      | 1¼ x 40½ - ¾ MDF  |   |                        |                  |  |
| R | Short Ledger Strips (2)     | 1¼ x 23 - ¾ MDF   |   |                        |                  |  |
| S | Long Grid Strips (8)        | 2 x 41¼ - ¼ Ply.  |   |                        |                  |  |

### Cutting Diagram

¼"x 48"- 96" PLYWOOD

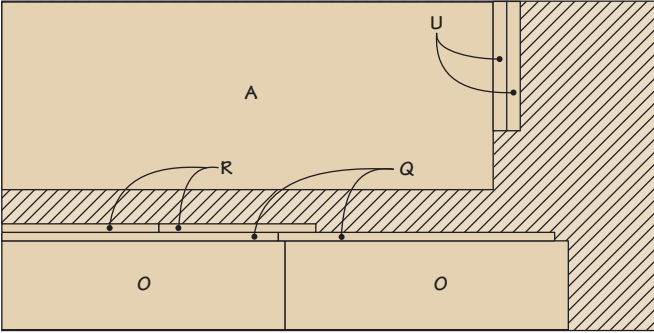


¾"x 48"- 96" MDF

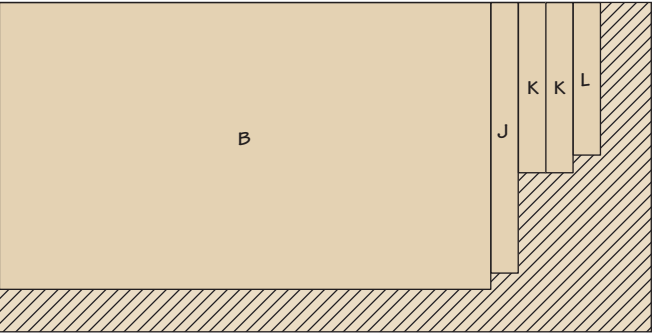


# Cutting Diagram

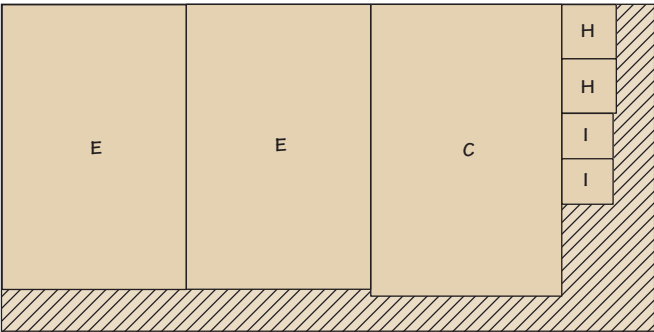
3/4"x 48"- 96" MDF



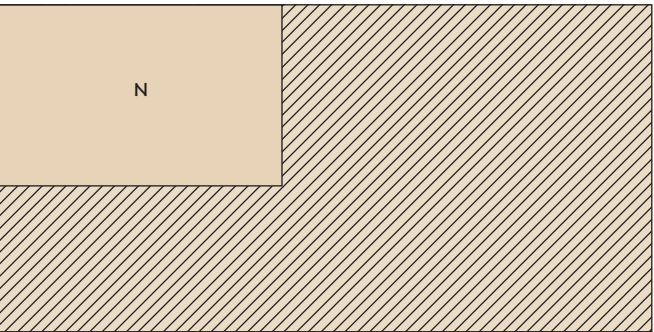
3/4"x 48"- 96" MDF



3/4"x 48"- 96" MDF



3/4"x 48"- 96" MDF



3/4"x 4"- 96" (2.7 Bd. Ft.)



3/4"x 4"- 48" (1.3 Bd. Ft.)



